

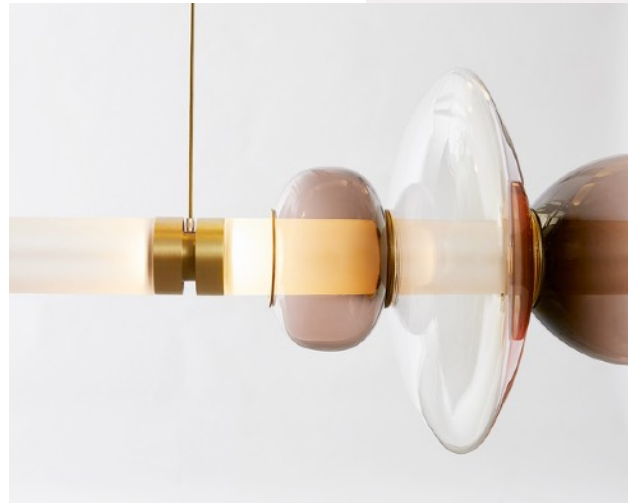
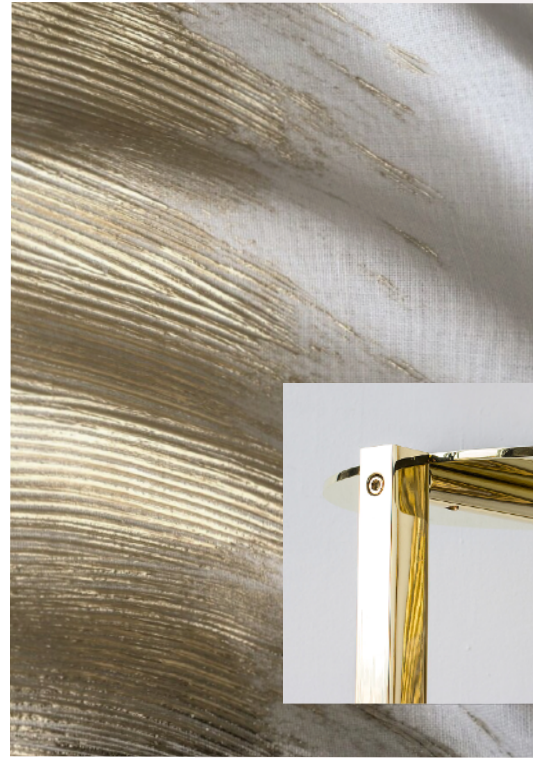
CKS
COLLECTIVE



here for the DESIGN- DEVOTED

WE'RE LIKELY MEETING BECAUSE WE SHARE
A LOVE OF ALL THINGS BEAUTIFUL. CKS
COLLECTIVE WAS FORMED OUT OF A
PASSION FOR THAT.

WHILE GORGEOUS DESIGN NEEDS NO
INTRODUCTION, WE INVITE YOU TO GET TO
KNOW CKS COLLECTIVE: A CHICAGO-BASED
INTERIORS RESOURCE, FOUNDED BY
CHRISTINA KARVELAS STAVROPOULOS,
JUST-LAUNCHED FOR THE DESIGN TRADE.



—
the story

a dynamic
EDIT



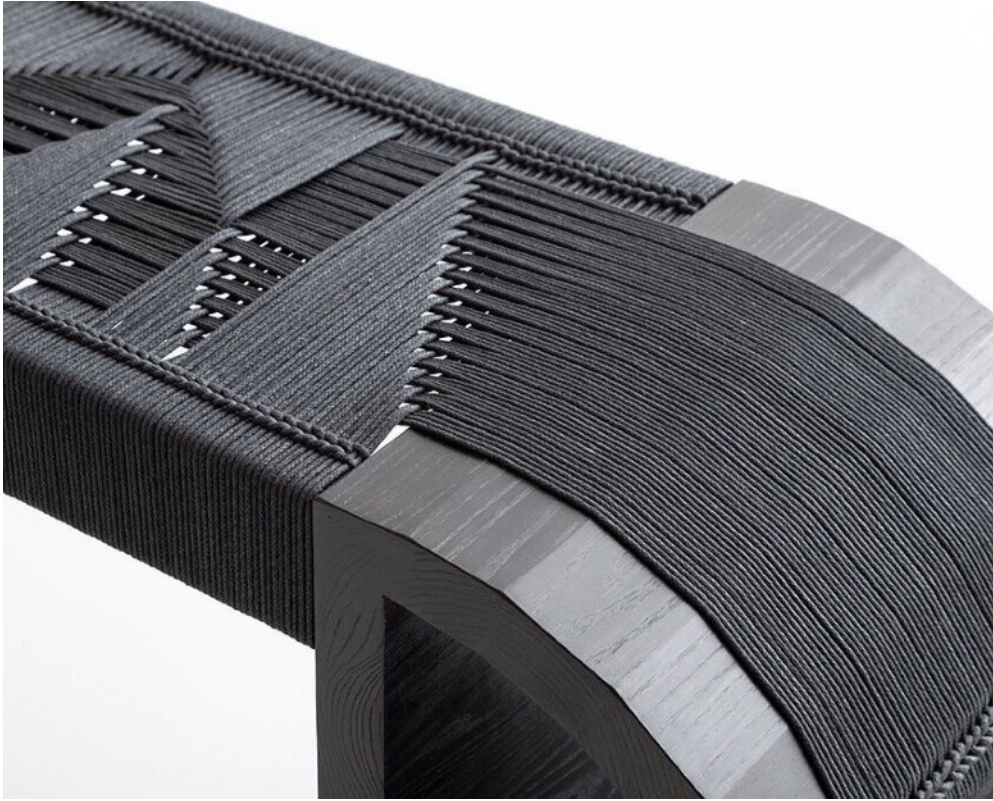
THROUGH THE COLLECTIVE, CHRISTINA SHARES HER NATURAL EYE, AN AESTHETIC FURTHER CULTIVATED FROM OVER 15 YEARS OF REPRESENTING AND COLLABORATING WITH THE INDUSTRY'S FOREMOST COVETED LINES AND INSPIRED MINDS.



a living RESOURCE

MUCH LIKE THE SPACES WE LOVE THAT ARE ALWAYS EVOLVING, THE COLLECTIVE IS IN CONSTANT FLOW. FOLLOW THE **#CKSTHETIC** ONLINE — AT **CKSCOLLECTIVE.COM** — AND IN REAL LIFE AT POP-UP GALLERIES THROUGHOUT CHICAGO.

METICULOUS ARTISANSHIP, INDULGENT MATERIALS,
AND CAPTIVATING COMPOSITIONS ARE AT THE HEART
OF THE COLLECTIVE —



WHICH BRINGS A
DELIBERATE SELECTION
OF LIGHTING, FURNITURE,
AND TEXTILES FROM
TALENT ALL OVER THE
GLOBE TO CHICAGO'S
DESIGN LANDSCAPE.

MORE ON THIS

MEET THE COLLECTIVE

ADAM OTLEWSKI

BEN + AJA BLANC

CROSLAND + EMMONS

GABRIEL SCOTT

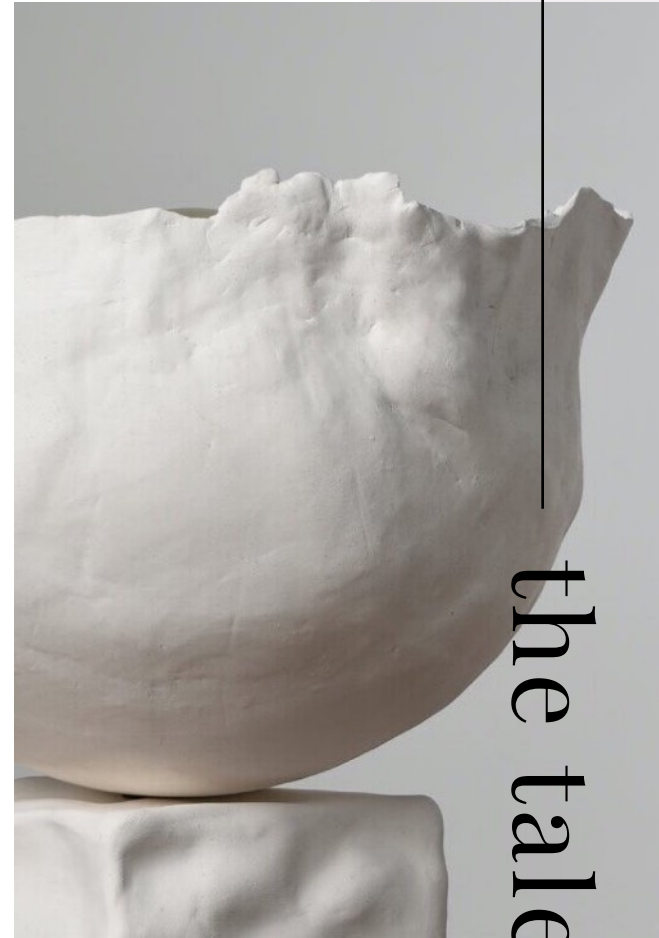
JOHN SHEPPARD

LE STUDIO ANTHOST

MATERIA

PEG WOODWORKING

SEER STUDIO



the talent

MORE ON THIS

ADAM OTLEWSKI

VIEW COLLECTION

BY USING MATERIALS AND TECHNIQUES THAT PROMOTE SUBTLE VARIANCES, ADAM OTLEWSKI AIMS TO GIVE DEPTH AND CHARACTER TO OTHERWISE PURE GEOMETRY.

HAND-DYED LEATHER AND ACID-RUBBED PATINA SOLUTIONS ARE AMONG THE CHOICES THAT LEAVE ADAM OTLEWSKI'S HAND VISIBLE IN EVERY OBJECT.



BEN + AJA BLANC

VIEW COLLECTION



UTILIZING DIVERSE NATURAL ELEMENTS AND HISTORICAL ART REFERENCES, BEN + AJA BLANC'S UNIQUE AESTHETIC REFLECTS A MUTUAL PURSUIT OF BEAUTY THROUGH THE CREATION OF NEW FORMS AND JUXTAPOSITION OF MATERIAL.

THE HUSBAND AND WIFE DESIGN DUO MERGE FINE ART WITH FUNCTIONALITY TO CREATE BESPOKE MIRRORS, LIGHTING, FURNITURE, AND OBJECTS RESULTING IN A NEW APPROACH TO AMERICAN DESIGN MINIMALISM.

CROSLAND+ EMMONS

VIEW COLLECTION

IN A WORLD WHERE EVERYTHING LEANS TOWARD PRECISION AND MASS PRODUCTION, CROSLAND + EMMONS CREATES LIGHTING AND OBJECTS THAT PAY HOMAGE TO THE HUMAN TOUCH.

IMPERFECT, VISUALLY OFF-BALANCE, AND BESPOKE — EACH PIECE IS INTENTIONALLY VOID OF COLOR TO HIGHLIGHT ITS SHAPE AND BEAUTY.



GABRIEL SCOTT

VIEW COLLECTION

DRAWING INFLUENCE FROM ARCHITECTURE AND JEWELRY DESIGN, GABRIEL SCOTT'S WORK REFLECTS THE SYMBIOTIC RELATIONSHIP BETWEEN MASCULINE AND FEMININE.

EACH PIECE, HANDMADE IN MONTREAL, DEMONSTRATES THE STUDIO'S SIGNATURE AESTHETIC — A BALANCED DUALITY BETWEEN DELICATE AND TOUGH.



JOHN SHEPPARD

VIEW COLLECTION

WITH EACH OBJECT FORMED AND FINISHED BY HAND, JOHN SHEPPARD ENSURES LAYERS OF DEPTH AND TEXTURE — EMBRACING IRREGULARITIES RATHER THAN DISGUIISING THEM.

THE NEW YORK CITY-BASED ARTIST'S WORK IS CHARACTERIZED BY CLEAN GEOMETRIC SHAPES, AND INSPIRED BY A RANGE OF INFLUENCES INCLUDING NATURE, BRUTALISM, RICHARD SERRA, ART DECO, AND OUTER SPACE. THE END RESULT IS A COLLECTION THAT FEELS OF-THE-MOMENT, YET TIMELESS.

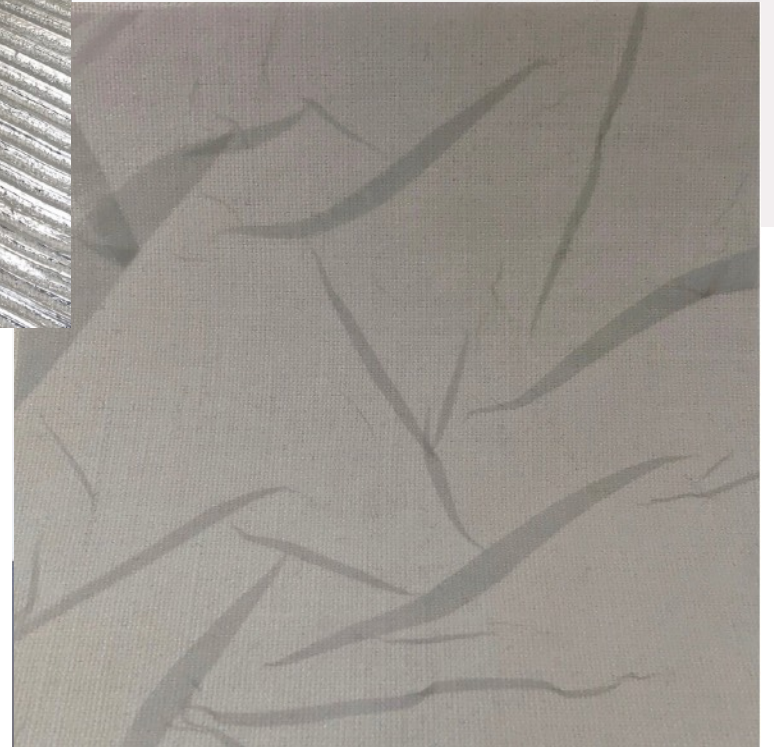


LE STUDIO ANTHOST

VIEW COLLECTION

BY HANDCRAFTING SURFACES WITH UNCOMMON TECHNIQUES,
LE STUDIO ANTHOST TRANSFORMS FABRIC INTO PRECIOUS
MATERIAL IMBUED WITH MYSTERY AND MAGIC.

THE COLLECTION PUSHES THE BOUNDARIES OF INTERIOR
TEXTILES WITH MATERIAL THAT INVITES TOUCH, IMPARTS
ELEGANCE, AND INSPIRES FANTASY.



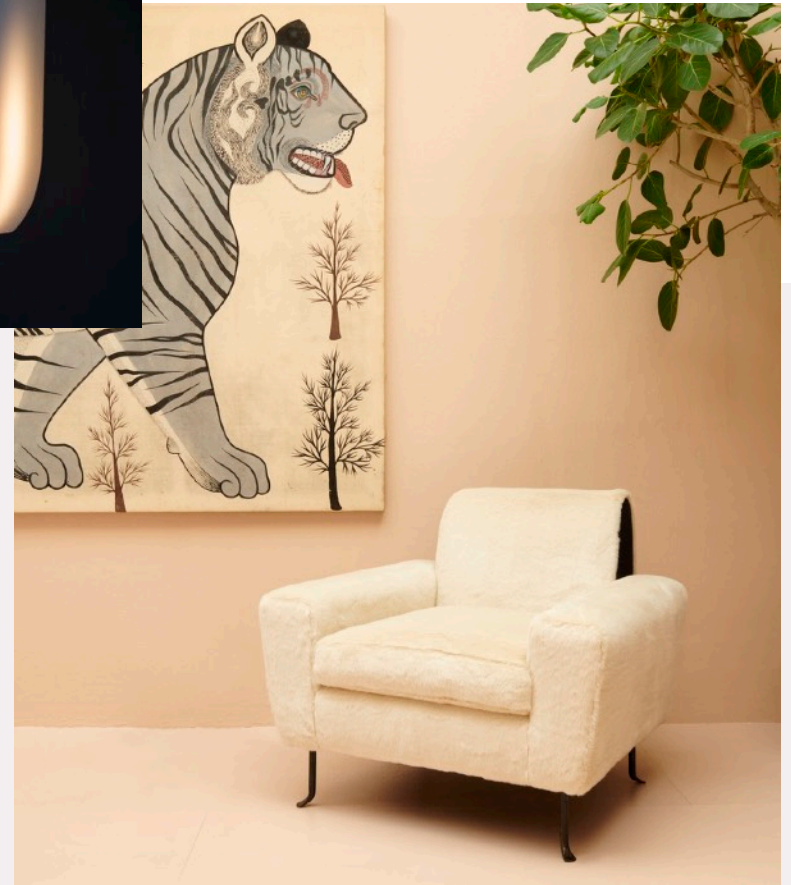
MATERIA

VIEW COLLECTION



TAKING ITS NAME FROM THE LATIN WORD FOR MATTER, MATERIA STRIVES TO REDUCE EACH FORM IN THE COLLECTION TO ITS ESSENTIAL STRUCTURAL ELEMENTS WHILE SPEAKING DIRECTLY TO EACH OBJECT'S COMPOSITION.

BASED IN THE HUDSON VALLEY REGION OF NEW YORK, MATERIA IS A DESIGN STUDIO THAT FOCUSES ON CRAFTING FURNITURE, LIGHTING, AND OBJECTS WHICH AMPLIFY THE INHERENT BEAUTY FOUND IN RAW, ELEGANT MATERIALS SUCH AS STONE, BRASS, CALFSKIN, PARCHMENT, STEEL, PORCELAIN, AND WOOD.



PEG WOODWORKING

VIEW COLLECTION



PAYING TRIBUTE TO THE CLEAN LINES AND INTRICATE WEAVING FOUND IN SHAKER AND SCANDINAVIAN DESIGN, PEG WOODWORKING'S APPROACH IS A CONTEMPORARY TAKE ON THE TRADITIONAL.

THE INTRICATE AESTHETICS OF THE HAND-WEAVING COMBINED WITH THE ANGULAR GEOMETRY OF WOODWORKING, CREATES A HARMONIOUS BALANCE OF BOLD AND DELICATE DETAILS.



SEER STUDIO

VIEW COLLECTION



WITH LASTING MATERIALS INCLUDING ITALIAN MARBLE AND TEXAS WHITE OAK, SEER STUDIO CRAFTS FURNITURE THAT IS CONTEMPORARY YET TIMELESS.

DESIGNED AND BASED IN AUSTIN, EVERY PIECE IS MADE TO ORDER IN CLOSE COLLABORATION WITH ARTISANS IN CENTRAL TEXAS.



THE DISCERNING CKS APPROACH FINDS ULTIMATE
INTRIGUE IN THE JUXTAPOSITION —





CONCEPTS THAT LAYER
THE MASCULINE AND THE
FEMININE, THE PROVOCATIVE
AND THE REFINED, THE
MODERN AND THE TIMELESS.



tell me MORE



THE WEB

WWW.CKSCOLLECTIVE.COM

THE INBOX

INFO@CKSCOLLECTIVE.COM



THE 'GRAM

[@CKSCOLLECTIVE](https://www.instagram.com/CKSCOLLECTIVE)

THE SCOOP

[CKS NEWSLETTER](#)

the details