

# ATELIER ARETI

## PRODUCT

Disc and sphere Bent Intersecting 518  
Wall light / Disc intersecting disc

## MATERIALS AND COLOUR OPTIONS

Polished brass; powder coated metal; white glass

## VERSIONS

Polished brass disc; black cone attachment

518OL-W01-BR01

Polished brass disc; white cone attachment

518OL-W01-BR02

## TECHNICAL DETAILS

1 x G9 LED 5W max

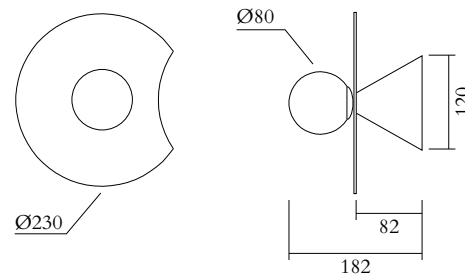
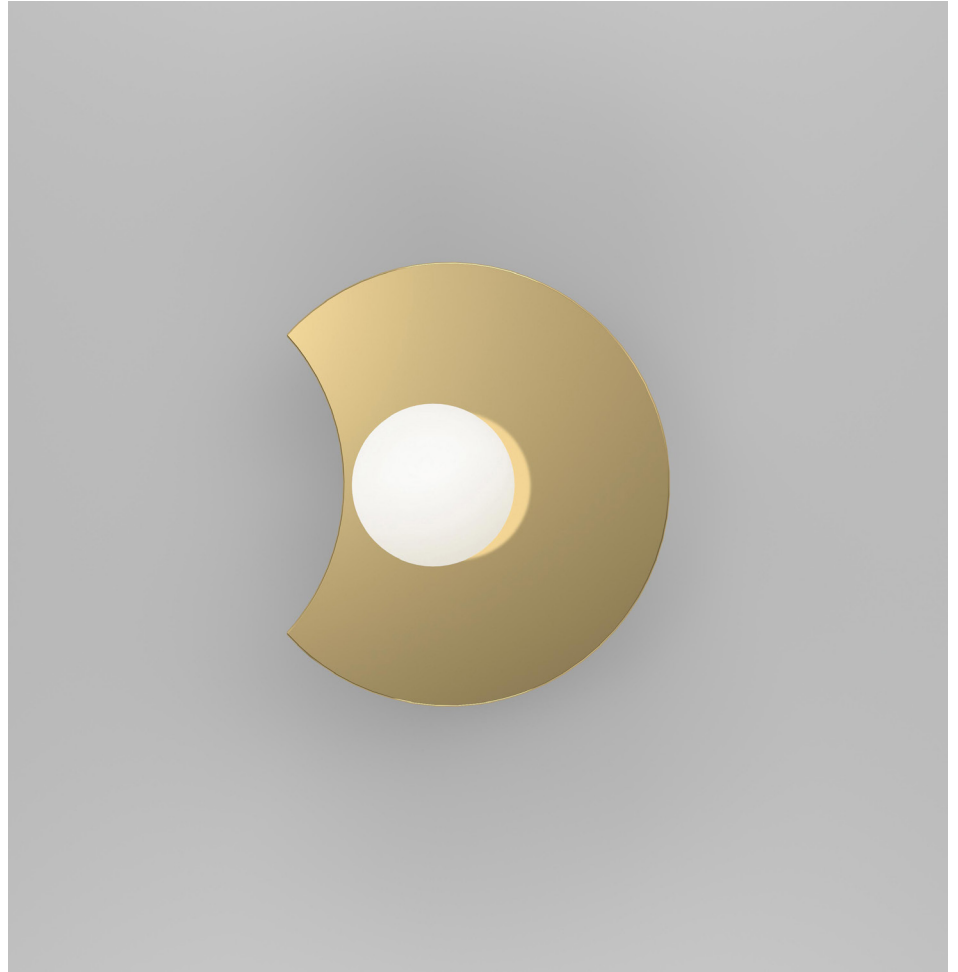
110-230V

IP20

Lights bulb not included

## MADE IN

Germany



Sizes in mm. Flat attachments available on request. Variations in colour and size are available for some collections, please contact Areti for more details.

Our collections are hand made and made to order, small irregularities in shape or surface will occur, they are inherent to the hand made process and should not be seen as flaws. For detailed information on any products: [contact@atelierareti.com](mailto:contact@atelierareti.com)

# ATELIER ARETI

## PRODUCT

Disc and sphere Bent Intersecting 518  
Wall light / Bent

## MATERIALS AND COLOUR OPTIONS

Polished brass; powder coated metal; white glass

## VERSIONS

Polished brass disc; black cone attachment

518OL-W02-BR01

Polished brass disc; white cone attachment

518OL-W02-BR02

## TECHNICAL DETAILS

1 x G9 LED 5W max

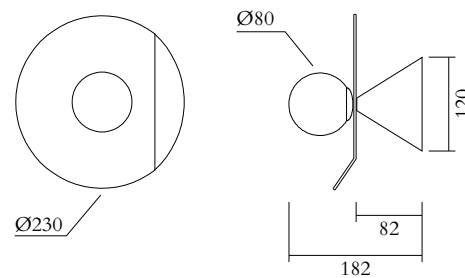
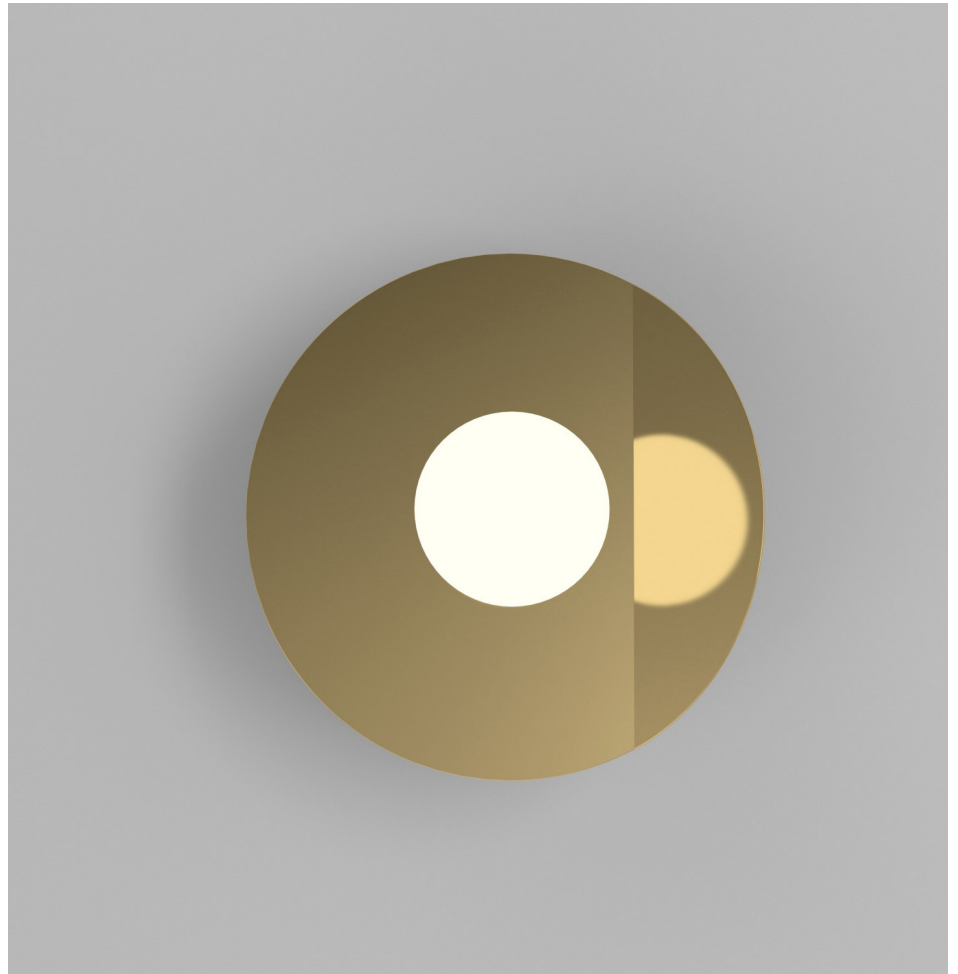
110-230V

IP20

Lights bulb not included

## MADE IN

Germany



Sizes in mm. Flat attachments available on request. Variations in colour and size are available for some collections, please contact Areti for more details.

Our collections are hand made and made to order, small irregularities in shape or surface will occur, they are inherent to the hand made process and should not be seen as flaws. For detailed information on any products: [contact@atelierareti.com](mailto:contact@atelierareti.com)

# ATELIER ARETI

## PRODUCT

Disc and sphere Bent Intersecting 518  
Wall light / Disc intersecting tubes

## MATERIALS AND COLOUR OPTIONS

Polished brass; powder coated metal; white glass

## VERSIONS

Polished brass disc; black cone attachment

518OL-W03-BR01

Polished brass disc; white cone attachment

518OL-W03-BR02

## TECHNICAL DETAILS

1 x G9 LED 5W max

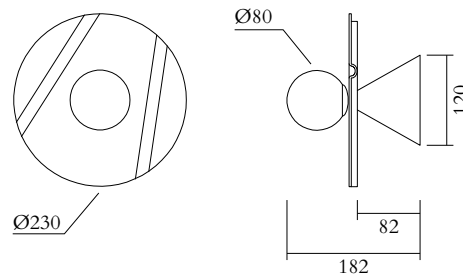
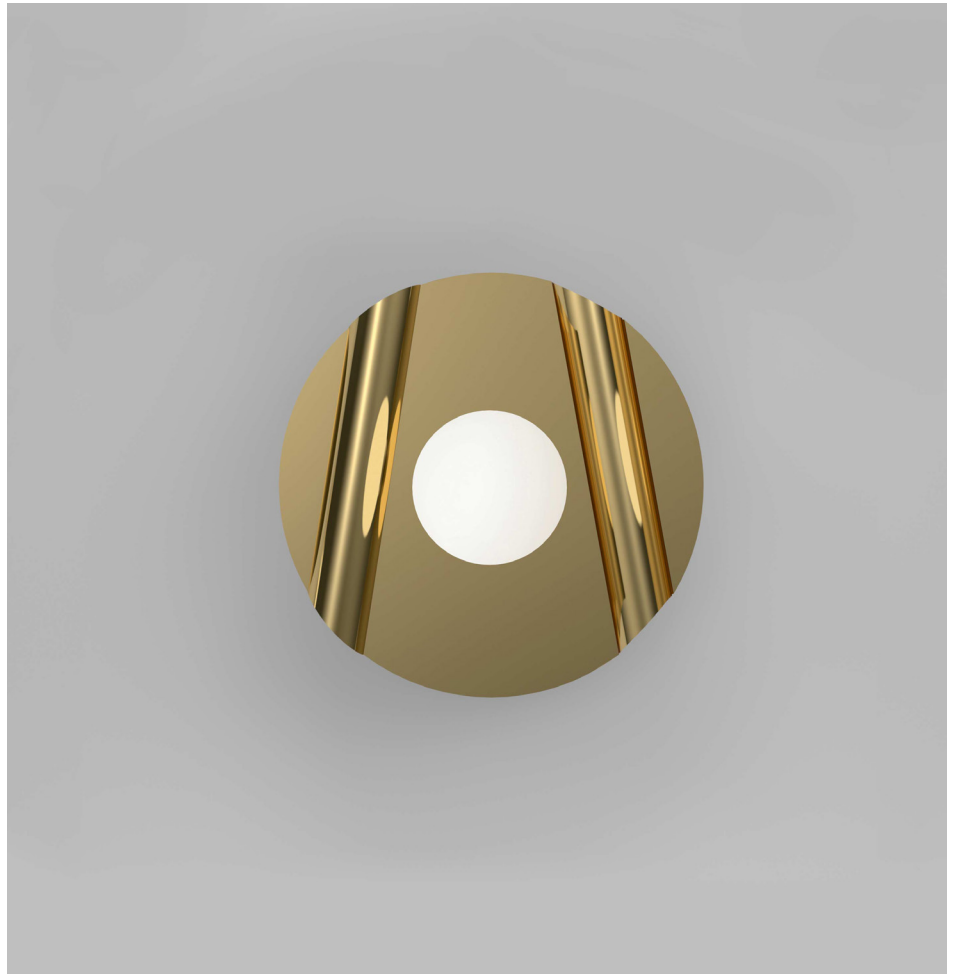
110-230V

IP20

Lights bulb not included

## MADE IN

Germany

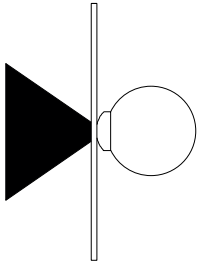


Sizes in mm. Flat attachments available on request. Variations in colour and size are available for some collections, please contact Areti for more details.

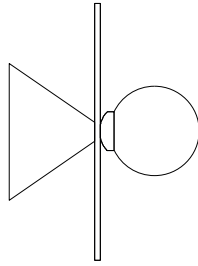
Our collections are hand made and made to order, small irregularities in shape or surface will occur, they are inherent to the hand made process and should not be seen as flaws. For detailed information on any products: [contact@atelierareti.com](mailto:contact@atelierareti.com)

# ATELIER ARETI

## Wall attachment options

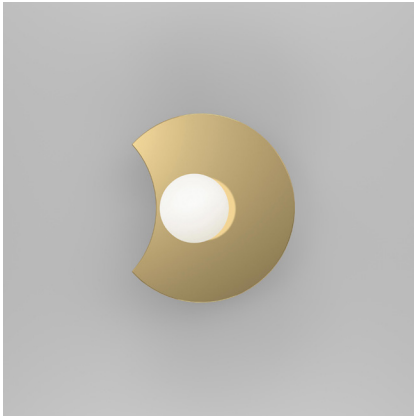


BR01:  
Black cone attachment

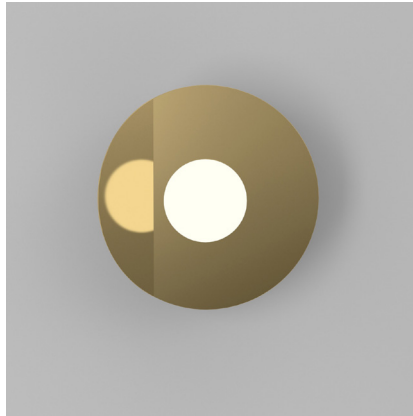


BR02:  
White cone attachment

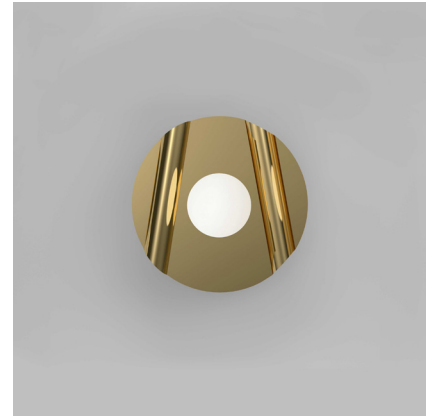
## Versions



W01:  
Disc intersecting disc



W02:  
Bent



W03:  
Disc intersecting tubes