

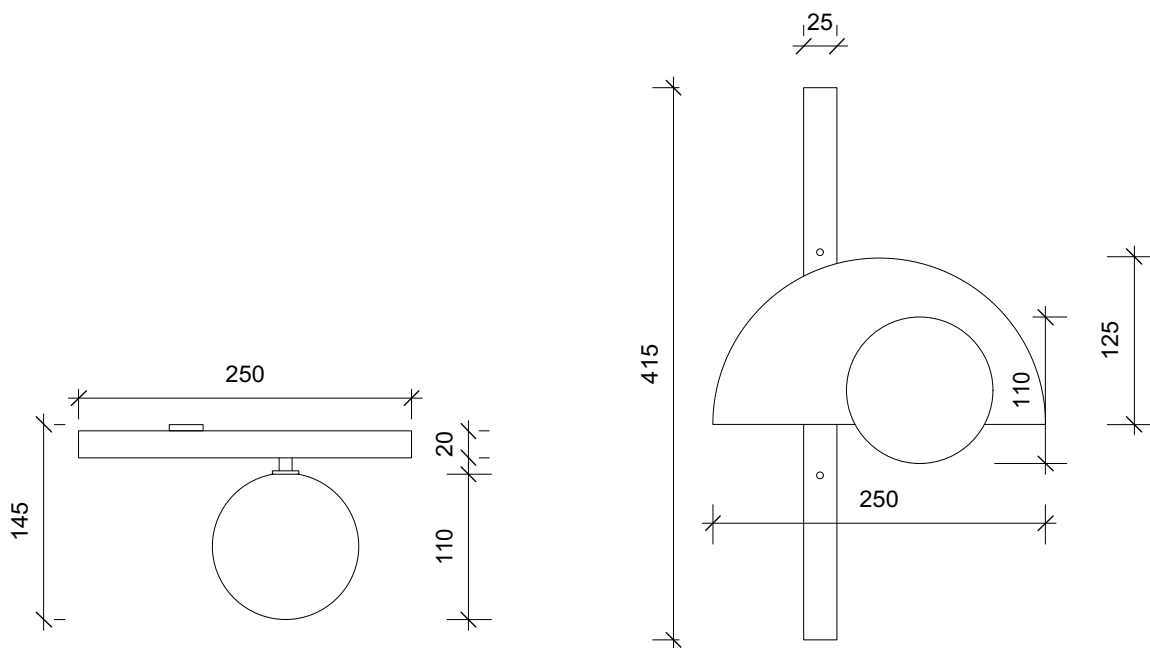


SQUARE IN CIRCLE  
S T U D I O

## EXHIBITION – WALL LIGHT

REF WL 008

The inspiration for this concept came from observing Joost Schmidt's Bauhaus Exhibition in Weimar poster, 1923. Schmidt's poster is bold and industrial in its stark graphic composition. These elements were lifted from the page and transferred into the light design. A semi-circle is attached to the top of the long rectangular wall bracket with a globe fixed to the front face. Crafted from two tone metals; shown in dark bronze, brushed brass and opaque glass globe.



MATERIAL:  
Electroplated Iron/ hand brushed finish

FINISH:  
Brushed brass/ dark bronze/ white opaque glass  
(Other finishes available)

DIMENSION :

Height	415mm	16.3"
Width	250mm	9.8"
Projection	145mm	5.7"
Globe dia	110mm	4.3"

RECOMMENDED LAMP: 1 x G9 LED pin

WATTAGE: 3W

VOLTAGE: 230V

COLOUR : 3000K

NET WEIGHT: 1.4kg 3lb

INFO@CKSCollective.COM



WWW.CKSCollective.COM